

# ENTRANCE EXAMINATION-2016

**M.A. (Applied Psychology)**  
**[Set A]**

L NO.

--	--	--	--	--	--	--	--	--

Signature of Invigilator

me : Hour 45 Minutes

**Total Marks: 100**

### Instructions to Candidates

**Do not write your name or put any other mark of identification anywhere in the OMR Answer Sheet. IF ANY MARK OF IDENTIFICATIONS IS DISCOVERED ANYWHERE IN OMR ANSWER SHEET, the OMR sheet will be cancelled, and will not be evaluated.**

This Question Booklet contains this cover page and a total of **100 Multiple Choice Questions of 1mark**. Space for rough work has been provided at the beginning and end. Available space on each page may also be used for rough work.

Each correct answer carries one mark.

There is negative marking in Multiple Choice Questions. For each wrong answer 0.25 marks will be deducted.

**USE OF CALCULATOR IS NOT PERMITTED.**

**USE/POSSESSION OF ELECTRONIC GADGETS LIKE MOBILE PHONE, iphone, iPad, pager ETC. is not permitted.**

Candidate should check the serial order of questions at the beginning of the test. If any question is found missing in the serial order, it should be immediately brought to the notice of the Invigilator. No pages should be torn out from this question booklet.

Answers must be marked in the OMR answer sheet which is provided separately. OMR answer sheet must be handed over to the invigilator before you leave the seat.

The OMR answer sheet should not be folded or wrinkled. The folded or wrinkled OMR/Answer Sheet will not be evaluated.

Write your Roll Number in the appropriate space (above) and on the OMR Answer Sheet. Any other details, if asked for, should be written only in the space provided.

1. There are four alternative answers to each question marked A, B, C and D. Select one of the answers you consider most appropriate and fill up the corresponding oval/circle in the OMR Answer Sheet provided to you. The correct procedure for filling up the OMR Answer Sheet is mentioned below.

2. Use Black or Blue Ball Pen only for filling the ovals/circles in OMR Answer Sheet while answering the Questions. For your Choice of answers darken the correct oval/circle completely. If the correct answer is 'B', the corresponding oval/circle should be completely filled and darkened as shown below.

**CORRECT METHOD**

(A) (B) (C) (D)

**WRONG METHOD**

1. Which among the following branches of Psychology specifically studies behavior in relation to genetic inheritance?
  - A. Evolutionary psychology
  - B. Developmental psychology
  - C. Health psychology
  - D. Experimental Psychology
2. Which among the following Schools of Thought used Introspection as a method of analysis?
  - A. Functionalism
  - B. Behaviorism
  - C. Structuralism
  - D. Psychoanalysis
3. Who among the following is credited with the book titled *Principals of Psychology*?
  - A. Wilhelm Wundt
  - B. William James
  - C. B.F. Skinner
  - D. None of the above
4. Who among the following was the first female president of the American Psychological Association (APA)?
  - A. Margaret Floy Washburn
  - B. Leta Stetter Hollingworth
  - C. Karen Horney
  - D. Mary Calkins
5. Which among the following suggests that all individuals posses an innate tendency to grow and develop?
  - A. Psychodynamic perspective
  - B. Humanistic perspective
  - C. Cognitive perspective
  - D. All of the above
6. The following involves an in-depth, comprehensive, and intensive investigation of an individual or small group of people:
  - A. Observation
  - B. Interview
  - C. Field study
  - D. Case study
7. Who among the following study how psychological processes may differ among people of different cultures?
  - A. Cultural psychologists
  - B. Cross-cultural psychologists
  - C. Social psychologists
  - D. None of the above
8. Double-Blind Study refers to:
  - A. An experimental procedure in which both researchers and participants are uninformed about the nature of the independent variable.
  - B. A study where participants are uninformed about the dependent variable under study.
  - C. An experimental procedure in which part of the information about the nature of the study is withheld from the participants
  - D. A study where one group of participants is subjected to placebo effect.
9. Chemical messengers that relay neural messages across the synapse are known as:
  - A. Neurotransmitters
  - B. Hormones
  - C. Neural chemicals
  - D. Synaptic vesicles
10. The ability of brain to adapt or modify itself as the result of experience is known as:
  - A. Maturation
  - B. Plasticity
  - C. Neural growth
  - D. Both a & c
11. Neurons that communicate information from the nervous system to muscles and glands are known as:
  - A. Sensory neurons
  - B. Inter-neurons
  - C. Mirror neurons
  - D. Motor neurons



12. Which among the following regulates brain activity during sleep and dreaming?
- Medulla
  - Cerebral cortex
  - Pons
  - Spinal chord
13. What section of a nerve cell receives incoming information?
- Axon
  - Terminal button
  - Synapse
  - Dendrite
14. Transformation of stimulus information into nerve signals by the sense organs such as eyes, ears, and nose is known as:
- Perception
  - Sensation
  - Transduction
  - All of the above
15. According to Signal Detection Theory, the process of sensation of a particular stimulus depends on:
- Characteristics of the stimulus,
  - Background stimulation
  - Detector
  - All of the above
16. The Gestalt principles suggesting that human brains prefer to group stimulus elements together to form a percept are known as:
- Laws of perception
  - Law of Figure-ground relationship
  - Laws of perceptual organization
  - Laws of perceptual set
17. Salivation and eye blinks are examples of:
- Reflexes
  - Biological responses
  - Acquisition
  - Physiological reactions
18. A program in which reinforcement depends on pre-decided number of correct responses is known as:
- Fixed Interval Schedule
  - Variable Interval Schedule
  - Variable Ratio Schedule
  - Fixed Ratio schedule
19. Instinctive Drift refers to:
- The tendency of an organism's innate responses to interfere with learned behavior.
  - The tendency of an organism to pay attention to multiple stimuli at the same time.
  - The tendency of an organism to respond to multiple stimuli instinctively.
  - All of the above.
20. A highly preferred activity used to reinforce a least preferred activity is known as:
- Token economy
  - Secondary reinforce
  - Premack principle
  - Chaining
21. The application of an aversive stimulus after a response is known as:
- Negative reinforcement
  - Aversion training
  - Negative punishment
  - Positive punishment
22. The concept of Insight Learning was popularized by:
- Ivan Pavlov
  - J. B. Watson
  - Wolfgang Kohler
  - B. F. Skinner
23. Which among the following are true about Cognitive Learning?
- Inferences are made about mental processes that are not directly observable.
  - Learning involves insight, observational learning, cognitive maps, and other more complex forms of learning.

- C. Developed as a rebellion against the narrow perspective of behaviorism  
D. All of the above.
24. The inability to remember events during the first two or three years of life is known as:  
A. Early amnesia  
B. Childhood amnesia  
C. Long-term amnesia  
D. None of the above
25. Which among the following are common in highly emotional experiences?  
A. Working memory  
B. Semantic memory  
C. Flashbulb memory  
D. Sensory memory
26. Cognitive strategies or "rules of thumb" used as shortcuts to solve complex mental tasks are known as:  
A. Heuristics  
B. Algorithms  
C. Cognitive maps  
D. Scripting
27. Creative intelligence is a component of:  
A. Cattell's Theory of Intelligence  
B. Gardner's Theory of Intelligence  
C. Spearman's Theory of Intelligence  
D. Sternberg's Theory of Intelligence
28. A biologically organized mental structure in the brain that facilitates the learning of language is called:  
A. Language Acquisition Device  
B. Language Acquisition Centre  
C. Language Acquisition Region  
D. Language Acquisition Mechanism
29. In Piaget's theory, the inability to realize that there are other viewpoints beside one's own is known as:  
A. Egocentrism  
B. Object permanence  
C. Mental representation  
D. Assimilation
30. The authoritative style of parenting is characterized by:  
A. Parent permits child to make decisions in accord with developmental readiness; listens to child's viewpoint.  
B. Parent is warm, attentive, and sensitive to child's needs and interests.  
C. Parent is warm, but may spoil the child.  
D. Both A & B
31. When one engages in an activity regardless of an external reward, the behavior is guided by:  
A. Need for achievement  
B. Intrinsic motivation  
C. Extrinsic motivation  
D. None of the above
32. A socially acceptable reason for actions that are really based on motives believed to be socially unacceptable is known as:  
A. Rationalization  
B. Reaction Formation  
C. Sublimation  
D. Displacement
33. Who among the following is considered as the proponent of Word Association Test to understand the unconscious conflicts in an individual:  
A. Henry Murray  
B. Carl Jung  
C. Sigmund Freud  
D. Donald Winnicott
34. The process in which cognitions, behavior, and the environment mutually influence each other is known as:  
A. Situational- Interactionist Approach  
B. Reciprocal Determinism  
C. Interaction Activism  
D. Interactionism



35. The concept of Locus of Control was given by:  
 A. Albert Bandura  
 B. Walter Mischel  
 C. Julian Rotter  
 D. None of the above
36. A group's expectations regarding what is appropriate and acceptable for its members' attitudes and behaviors is known as:  
 A. Social Norms  
 B. Situationism  
 C. Compliance  
 D. Conformity
37. Weakening of each group member's obligation to act when responsibility is perceived to be shared with all group members is known as:  
 A. Bystander effect  
 B. Diffusion of responsibility  
 C. Social conformity  
 D. Obedience
38. In Milgram's original study, about what proportion of the subjects gave the maximum shock?  
 A. about two-thirds  
 B. about 70 percent  
 C. about 50 percent  
 D. Nearly 100 percent
39. The phenomenon of blaming an innocent person or a group for one's own troubles and then discriminating against them is known as:  
 A. Stereotyping  
 B. Prejudicing  
 C. Discriminating  
 D. Scapegoating
40. If you wanted to stop ragging in your school or college, what would most likely be an effective strategy to follow?  
 A. Punish the perpetrator publicly.  
 B. Teach the victim to fight back.  
 C. Reward the perpetrator for not ragging any victims.  
 D. Change the entire school/college system to have zero tolerance for ragging.
41. The Diagnostic & Statistical Manual of Mental Disorders- 5 (DSM-5) was published in the year:  
 A. 2010  
 B. 2011  
 C. 2012  
 D. 2013
42. Which among the following types of schizophrenia is characterized by motionlessness for hours or days?  
 A. Disorganized type  
 B. Paranoid type  
 C. Catatonic type  
 D. Residual type
43. The practice of attaching diagnoses of mental disorders to people and then using them as stereotypes is called:  
 A. Labelling  
 B. Bias  
 C. Stereotyping  
 D. Miss-diagnosis
44. The relationship between the therapist and the client, with both parties working together to help the client deal with mental or behavioral issues is known as:  
 A. Therapist-Client Relationship  
 B. Therapeutic Relationship  
 C. Therapeutic Alliance  
 D. Therapist-Client Alliance
45. Which among the following personality disorders is characterized by instability and impulsivity, unpredictable moods and stormy interpersonal relationships?  
 A. Schizoaffective Personality Disorder  
 B. Narcissistic Personality Disorder  
 C. Avoidant Personality Disorder  
 D. Borderline Personality Disorder

46. The commonly used statistic to test the significance of difference between two groups is:
- F-test
  - t-test
  - Chi-Square
  - None of the above
47. A number typically describing a population characteristic is known as:
- Statistic
  - Parameter
  - Datum
  - Median
48. In the following, there is a meaningful zero to the measurement:
- Nominal measurement
  - Ordinal measurement
  - Interval measurement
  - Ratio measurement
49. The average amount by which the characteristics of samples from the population differ from the characteristic of the whole population is known as:
- Estimation Error
  - Researchers' Bias
  - Standard Error
  - Statistical Insignificance
50. When the frequency curve is lopsided rather than symmetrical, it is known as:
- Skewness
  - Kurtosis
  - Asymmetrical curve
  - Bimodal curve
51. The Sixteen Personality Factor (16 PF) Questionnaire was developed by:
- Gordon W. Allport
  - Carl Gustav Jung
  - Hans Eysenck
  - Raymond Cattell
52. The following is true of Nomothetic approach to personality:
- All people are governed by the same basic behavioural principles.
  - Each individual is unique and cannot be compared with another
  - Individuation and uniqueness of people accounts for personality differences
  - All of the above
53. The reliability of a diagnostic category indicates:
- It acknowledges the uniqueness of each individual.
  - It has explicitly stated criteria.
  - Clients with the label respond to treatment the same.
  - Diagnosticians apply it consistently.
54. The characteristic pattern of explanation people use to make sense of life-events is called:
- Self-serving bias
  - Attributional style
  - Cognitive appraisal
  - None of the above
55. In psychological research, debriefing refers to:
- Providing information about the true purpose of the study
  - Participants learning more about the benefits of the research to them and to society in general
  - Researcher has the opportunity to alleviate any discomfort the participants may be experiencing
  - All of the above
56. A reliability coefficient that assesses the agreement of observations made by two or more raters or judges is known as:
- Split-half reliability
  - Alternate-forms reliability
  - Inter-Rater reliability
  - Test-Retest reliability
57. The score occurring with greatest frequency in a distribution is known as:
- Mean
  - Median
  - Mode
  - Standard Deviation



58. The hypothesis stating that the independent variable has no effect and that there is no difference among the groups is known as:
- Null Hypothesis
  - Alternate Hypothesis
  - Directional Hypothesis
  - Non-directional Hypothesis
59. Which among the following represents the 'applied' branch in Organizational Behavior?
- Human Resource Management
  - Organizational Development
  - Both a & b
  - None of the above
60. According to Bandura's SCT, which among the following does NOT represent a Basic Human Capability?
- Forethought
  - Self-Reflective
  - Symbolizing
  - Cognitive Orientation
61. The voluntary and involuntary withdrawal from an organization is called:
- Absenteeism
  - Turnover
  - Layoff
  - All of the above
62. Which among the following is NOT true of the Perceived Organizational Support:
- The degree to which employees believe that the employer values their contribution to the organization
  - The degree to which employees believe that the employer cares about employee's well-being
  - The degree to which employees believe that the employer will not fire them if their performance is consistently deteriorating
  - All of the above
63. An employee's emotional attachment to, identification with, and involvement in the organization is known as:
- Affective commitment
  - Normative commitment
  - Continuance commitment
  - None of the above
64. Which among the following involves exposure to a hierarchy of stimuli while relaxing to decrease fears:
- Flooding
  - Systematic Desensitization
  - Aversive Conditioning
  - Implosion
65. Exaggerated sense of self-importance is a characteristic feature of:
- Paranoid personality disorder
  - Narcissistic personality disorder
  - Schizoid personality disorder
  - Schizotypal personality disorder
66. The re-channeling of sexual or aggressive impulses in a socially acceptable direction is known as:
- Displacement
  - Overcompensation
  - Projection
  - Sublimation
67. Among the following theories, which one states that emotion is a result of the interpretation of the causes of physiological arousal?
- James-Lange Theory
  - Cannon-Bard Theory
  - Cognitive Labelling Theory
  - None of the above
68. Which among the following speed up the nervous system activity?
- Opiates
  - Depressants
  - Stimulants
  - Psychedelic Drugs

69. Which among the following approaches to therapy explores issues such as death, freedom, isolation, and meaninglessness?
- Existential Approach
  - Humanistic Approach
  - Psychoanalytic Approach
  - All of the above
70. The NEO personality inventory consists of the following number of facets:
- 25
  - 30
  - 35
  - 40
71. Which among the following considers the central core of dysfunctional behavior to be due to irrational beliefs?
- Cognitive Behavior Therapy
  - Dialectical Therapy
  - Rational Emotive Behavior Therapy
  - Behavior Therapy
72. The use of statistics to pool and analyze results of different studies is known as:
- Mega-Analysis
  - Meta-Analysis
  - Multiple-Analysis
  - Mediated-Analysis
73. Organization Citizenship Behavior refers to:
- Promoting the effective functioning of the organization.
  - Actions and behaviors for the welfare of the organization that are not part of an employee's formal job requirements.
  - Completion of requirements of the contract with the organization
  - Both a & b
74. The tendency of an individual to underestimate the influence of external factors and overestimate the influence of internal factors when making judgments about the behaviour of others is known as:
- Self-serving bias
  - Selective perception
  - Fundamental attribution error
  - Distinctive perception
75. Judging an individual on the basis of one's perception of the group to which he/she belongs is called:
- Stereotyping
  - Prejudice
  - Projection
  - Discrimination
76. A personality trait that describes the degree to which an individual is responsible, dependable, persistent, and achievement-oriented and dutiful is known as:
- Extraversion
  - Agreeableness
  - Openness
  - Conscientiousness
77. Which among the following is NOT a component of emotional intelligence?
- Self-awareness
  - Self-motivation
  - Social skills
  - Sympathy
78. Which among the following is true of Type A Personality?
- Are always moving, walking, and eating rapidly
  - Feel impatient with the rate at which most events take place
  - Strive to think or do two or more things at once
  - All of the above
79. The extent to which a measuring instrument appears valid on its surface is known as:
- Content validity
  - Face Validity
  - Criterion Validity
  - Construct Validity



80. Which among the following is an inferential statistical test for comparing the means of three or more groups using a between participants design and one independent variable?
- One-Way ANOVA
  - Two-Way ANOVA
  - Three-Way ANOVA
  - None of the above
81. For which of the following disciplines is the prestigious Nobel Prize awarded?
- Physics and Chemistry
  - Physiology or Medicine
  - Literature, Peace and Economics
  - All of the above
82. Which among the following is true about Galileo, the Italian astronomer:
- Developed the telescope
  - Discovered four satellites of Jupiter
  - Discovered that the movement of pendulum produces a regular time measurement
  - All of the above
83. Exposure to sunlight improves an individual's health due to:
- Kills the skin bacteria
  - Helps in maintaining the homeostasis in the body
  - The pigment cells in the skin get stimulated and produce a healthy tan
  - Skin oil gets converted into Vitamin D
84. The First Afghan War took place in year:
- 1839
  - 1843
  - 1833
  - 1848
85. The abbreviation ICAO stands for:
- International Civil Aviation Organization
  - Indian Corporation of Agriculture Organization
  - International Company of Accounts Organization
  - Indian Civil Aviation Organization
86. The following country has largest deposits of mica in the world:
- USA
  - Japan
  - India
  - North Korea
87. The state of Rajasthan has the following number of seats in Lok Sabha:
- 32
  - 25
  - 30
  - 17
88. How many red blood cells are found in a normal human body?
- 15 trillion
  - 20 trillion
  - 25 trillion
  - 30 trillion
89. In the game of cricket, what is the distance between the two sets of the wickets?
- 18 yards apart
  - 20 yards apart
  - 22 yards apart
  - 24 yards apart
90. Penicillin was discovered by:
- Alexander Fleming
  - Albert Einstein
  - Archimedes
  - Aryabhatta
91. The official languages of the United Nations are:
- Hindi, Chinese, English, French, Korean and Spanish
  - Arabic, Chinese, English, French, Russian and Spanish
  - Arabic, Japanese, Chinese, English, French and Hindi
  - Korean, English, French, Hindi, Japanese and Spanish

92. In the series, 7, 10, 8, 11, 9, 12, ... What number should come next?  
 A. 10  
 B. 11  
 C. 12  
 D. 13
93. Bowl is to soup as cup is to:  
 A. Dish  
 B. Liquid  
 C. Coffee  
 D. Food
94. Enlightened is to Ignorant as Elated is to:  
 A. Worrier  
 B. Irritable  
 C. Intolerant  
 D. Despondent
95. Which among the following words does NOT belong with the others in the series?  
 A. Book  
 B. Index  
 C. Glossary  
 D. Chapter
96. The national sport of Canada is:  
 A. Soccer  
 B. Lacrosse  
 C. Cricket  
 D. Rugby
97. The normal threshold of hearing is around  
 A. 70-80 db  
 B. 50-60 db  
 C. 90-100 db  
 D. 25-45 db
98. Who is the newly elected President of Myanmar?  
 A. John Van Thio  
 B. Htin Kyaw  
 C. Tung Swe  
 D. Suu Kyi San
99. India has launched the Fulbright – Kalam Climate Fellowship in collaboration with?  
 A. United Kingdom  
 B. Australia  
 C. United States of America  
 D. Germany
100. Which among the following countries hosted the 2016 World Congress of Biosphere Reserves?  
 A. United States  
 B. Peru  
 C. Belgium  
 D. Switzerland



## ENTRANCE EXAMINATION-2017

M.A. (Applied Psychology)  
[Set A]

ROLL NO.

--	--	--	--	--	--	--	--	--	--

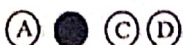
Signature of Invigilator

Time: 1 Hour 45 Minutes

Total Marks: 100

Instructions to Candidates

1. Do not write your name or put any other mark of identification anywhere in the OMR Answer Sheet. IF ANY MARK OF IDENTIFICATIONS IS DISCOVERED ANYWHERE IN OMR ANSWER SHEET, the OMR sheet will be cancelled, and will not be evaluated.
2. This Question Booklet contains this cover page and a total of 100 Multiple Choice Questions of 1 mark. Space for rough work has been provided at the beginning and end. Available space on each page may also be used for rough work.
3. Each correct answer carries one mark.
4. There is negative marking in Multiple Choice Questions. For each wrong answer 0.25 marks will be deducted.
5. USE OF CALCULATOR IS PERMITTED.
6. USE/POSSESSION OF ELECTRONIC GADGETS LIKE MOBILE PHONE, iPhone, iPad, pager ETC. is not permitted.
7. Candidate should check the serial order of questions at the beginning of the test. If any question is found missing in the serial order, it should be immediately brought to the notice of the Invigilator. No pages should be torn out from this question booklet.
8. Answers must be marked in the OMR answer sheet which is provided separately. OMR answer sheet must be handed over to the invigilator before you leave the seat.
9. The OMR answer sheet should not be folded or wrinkled. The folded or wrinkled OMR/Answer Sheet will not be evaluated.
10. Write your Roll Number in the appropriate space (above) and on the OMR Answer Sheet. Any other details, if asked for, should be written only in the space provided.
11. There are four alternative answers to each question marked A, B, C and D. Select one of the answers you consider most appropriate and fill up the corresponding oval/circle in the OMR Answer Sheet provided to you. The correct procedure for filling up the OMR Answer Sheet is mentioned below.
12. Use Black or Blue Ball Pen only for filling the ovals/circles in OMR Answer Sheet while answering the Questions. For your Choice of answers darken the correct oval/circle completely. If the correct answer is 'B', the corresponding oval/circle should be completely filled and darkened as shown below.

CORRECT  
METHOD

WRONG METHOD

1. Which perspective is known as the "third force" in Psychology?
  - (A) Psychoanalysis
  - (B) Behaviorism
  - (C) Cognitive Psychology
  - (D) Humanism.
  
2. Which of the following historical perspective gave rise to the evolutionary perspective?
  - (A) Behaviorism
  - (B) Structuralism
  - (C) Psychoanalysis
  - (D) Functionalism
  
3. Critical thinking means making judgments based on
  - (A) Emotional issues.
  - (B) Keeping a closed mind.
  - (C) Reason and logical evaluation.
  - (D) Authority and expertise.
  
4. In the definition of Psychology, mental processes means
  - (A) Internal, covert processes
  - (B) Outward behaviour
  - (C) Overt actions and reactions
  - (D) Only animal behavior
  
5. Who is the most associated with the techniques of introspection
  - (A) Wundt
  - (B) James
  - (C) Waltson
  - (D) Wertheimer
  
6. The entire group that a researcher is interested is called a
  - (A) Sample
  - (B) Subject Pool
  - (C) Population
  - (D) Survey
  
7. Double blind studies control for
  - (A) The placebo effect
  - (B) The experimenter effect
  - (C) Extrinsic motivation
  - (D) The placebo effect and the experimenter effect.



15. Difference between age groups would cause the most serious problems for which developmental research method.

- (A) Longitudinal
- (B) Cross- cultural
- (C) Cross- sectional
- (D) Cross-sequential

16. Which of the newborn's senses is the most fully developed at birth?

- (A) Hearing
- (B) Vision
- (C) Smell
- (D) Touch

17. The critical period for pregnancy is the

- (A) Germinal period
- (B) Embryonic period
- (C) Fetal period
- (D) Last trimester period

18. Using the Stanford- Binet IQ formula, what IQ would a person have whose mental age is 10 and whose chronological age is 20.

- (A) 150
- (B) 1.50
- (C) 50
- (D) None of the above

19. Sonu is four year old. The intelligence test that would most likely be used to determine his IQ is

- (A) WAIS-IV
- (B) WISC- IV
- (C) WPPSI-III
- (D) Dove test

20. According to Spearman, a traditional IQ test would most likely measure

- (A) Practical intelligence
- (B) Specific intelligence
- (C) General intelligence
- (D) Emotional intelligence

21. In Gardner's view, astronauts, navigators and artists would be high in \_\_\_\_\_ intelligence

- (A) Verbal/linguistic
- (B) Visual/ spatial
- (C) Interpersonal
- (D) Intrapersonal

22. The system of rules for combining words and phrases to make meaningful sentence is called

- (A) Syntax
- (B) Grammar
- (C) Phonics
- (D) Morphology

23. Which of the following is not one of the physiological factors in hunger

- (A) Stomach
- (B) Pancreas
- (C) Corpus callosum
- (D) All of the above

24. One of the main difference between anorexia and bulimia is that the anorexia

- (A) Never binges on food
- (B) Is obsessed about body weight
- (C) Can suffer from heart problem
- (D) All of the above

25. Which of the following is NOT one of the three elements of emotions

- (A) Subjective experience
- (B) Physical reaction
- (C) Behaviour
- (D) Attention

26. The theory of emotion that states the thalamus sends sensory information to the cortex and the sympathetic organs at the same time is the \_\_\_\_ theory.

- (A) James- Lange
- (B) Cannon- Bard
- (C) Schachter- Singer
- (D) Facial Feedback

27. Developing a person's sense of being male or female is called

- (A) Gender identity
- (B) Gender role
- (C) Gender typing
- (D) Gender stereotyping

28. The optimal amount of stress that people need to promote their health and sense of wellbeing is called

- (A) Intensity
- (B) Distress
- (C) Acute stress
- (D) Eustress



29. According to Lazarus, secondary appraisal involves
- (A) Estimating the severity of the stressor
  - (B) Classifying the stressor as a threat or challenge
  - (C) Deciding whether the stressor is a problem
  - (D) Estimating the resource a person has available for coping
30. When people have to work harder, do more work or work faster, they experience
- (A) Frustration
  - (B) Uncontrollability
  - (C) Pressure
  - (D) Conflict
31. The first response that people typically make to frustration is
- (A) Persistence
  - (B) Increasing efforts
  - (C) Personal
  - (D) Aggression
32. Who believed that traits existed as part of the nervous system
- (A) Costa and McCrae
  - (B) Allport
  - (C) Cattell
  - (D) Rogers
33. According to Cattell, traits that are numerous and can easily be seen by other people are called
- (A) Surface
  - (B) Central
  - (C) Source
  - (D) Complexity
34. In Big Five theory of personality, "C" stands for
- (A) Conscientiousness
  - (B) Contrariness
  - (C) Consciousness
  - (D) Complexity
35. Which of the following is not one of the traits found to have a genetic component in studies of identical twins?
- 
- (A) Intelligence
  - (B) Leadership ability
  - (C) Antagonism
  - (D) Aggressiveness

36. Which of the following methods would never be used by a behaviorist?
- (A) Interview
  - (B) Projective Test
  - (C) Direct Observation
  - (D) Personality Inventory
37. Observer bias would be a problem for any of the following methods except
- (A) Interview
  - (B) Projective test
  - (C) Direct Observation
  - (D) Personality Inventory
38. Which type of assessment would have the least problem with reliability?
- (A) Personality Inventory
  - (B) Projective Technique
  - (C) Subjective test
  - (D) Observational Study
39. Which of the following is not a type of behavioural assessment?
- (A) Direct Observation
  - (B) Thematic Appreciation Test
  - (C) Rating Scale
  - (D) Frequency Count
40. Which of the following is based on the five- factor model?
- (A) NEO-PI
  - (B) MMPI-2
  - (C) MBTI
  - (D) 16 PF
41. The study of the inherited portions of personality is called
- (A) Twin studies
  - (B) Behavioral genetics
  - (C) Adoptive studies
  - (D) Adoptive genetics
42. The Rorschach test has people
- (A) Tell stories about a picture with people in it.
  - (B) Answer hundreds of questions about their feelings and thoughts
  - (C) Perform tasks while an observer watches through a one way mirror
  - (D) Look at ambiguous visual stimuli and tell what they think it is.



43. How many source traits did Cattell use in developing his personality inventory?

- (A) 5
- (B) 10
- (C) 16
- (D) 23

44. The striving for fulfillment of one's potential is called

- (A) Self- concept
- (B) Self- efficacy
- (C) Self Actualization
- (D) The ideal Self

45. For Bandura, one of the most important person variables in determining personality is

- (A) Self Efficacy
- (B) Self Control
- (C) Self Determination
- (D) Self – Motivation

46. Research has begun to show some support for which of Freud's concepts?

- (A) The existence of an id, ego, and superego
- (B) The order of the psychosexual stages
- (C) The concept of an unconscious mind
- (D) The existence of the Oedipus complex

47. Which structure of the personality, according to Freud, works on the reality principle?

- (A) Id
- (B) Ego
- (C) Superego
- (D) Libido

48. Freud's emphasis on sex and sexual development was mostly due to

- (A) His own problems with sexuality
- (B) The culture within which he and his patients existed at the time
- (C) An increase in sexual deviancy across Europe in 19<sup>th</sup> century.
- (D) The influence of his colleagues.

49. Physical attractiveness is most involved in which of the following aspects of persuasion?

- (A) The source
- (B) The message
- (C) The audience
- (D) The Media

50. The area of the brain that is most involved in aggression is the
- (A) Amygdala
  - (B) Pineal Body
  - (C) Cerebellum
  - (D) Cortex
51. Memories of specific things that have happened to a person are kept in .....
- (A) Episodic memory
  - (B) Semantic memory
  - (C) Long-term memory
  - (D) Short-term memory
52. Dyslexia is associated with
- (A) Mental disorder
  - (B) Mathematical disorder
  - (C) Reading disorder
  - (D) Behavioral disorder
53. The stage in which a child begins to think logically about objects and events are known as-
- (A) Sensory-motor stage
  - (B) Formal operational stage
  - (C) Pre-operational stage
  - (D) Concrete operational stage
54. The hallucinations of schizophrenic are most likely to be:
- (A) Auditory
  - (B) Visual
  - (C) Tactual
  - (D) Olfactory
55. Theory of cognitive dissonance was offered by:
- (A) Skinner
  - (B) Bandura
  - (C) Festinger
  - (D) None of these
56. Maintenance of an internal biological balance is called:
- (A) Instinct
  - (B) Need
  - (C) Homeostasis
  - (D) None of these
57. Systematic desensitization is used in treatment of:
- (A) Schizophrenia
  - (B) Mood disorders
  - (C) Phobias
  - (D) Somatoform disorders



58. John B. Watson is best known as the founder of

- (A) Behaviorism
- (B) Functionalism
- (C) Rationalism
- (D) Structuralism

59. Conditioned response may be eliminated by withdrawing reinforcement. This is known as:

- (A) Stimulus generalization
- (B) Extinction
- (C) Discrimination
- (D) Spontaneous recovery

60. Axis III in DSM-IV address:

- (A) The major abnormal disorders
- (B) Primary personality disorders
- (C) Physical disorders
- (D) The severity of psychological symptoms

61. Cumulative frequency graphs are also called....

- (A) Ogive
- (B) Histogram
- (C) Bar diagram
- (D) None of the above

62. Range is what of the following:

- (A) A measure of variability
- (B) A measure of central tendency
- (C) A measure of progression
- (D) A measure of Mode

63. What is Spearman's Rho?

- (A) A measure of correlation
- (B) A measure of dispersion
- (C) A measure of normal probability
- (D) None of the above

64. The mode of the following data series is:

3, 3, 4, 5, 4, 4, 5, 5, 2, 1

- (A) 4
- (B) 3
- (C) 2
- (D) 1

65. Out of the following which one is the most dependable measure of dispersion:

- (A) Standard Deviation
- (B) Average deviation
- (C) Quartile Deviation
- (D) None of the above

66. In the presence of extreme scores in the data, which out of the following is a better measure of central tendency:  
(A) Mean  
(B) Median  
(C) Mode  
(D) Arithmetic mean
67. The Celsius scale of temperature is at what level of scaling?  
(A) Nominal  
(B) Interval  
(C) Ordinal  
(D) Ratio
68. Cronbach alpha is a measure of which kind of reliability?  
(A) Internal consistency  
(B) Temporal coefficient  
(C) Coefficient of equivalence  
(D) None of the above
69. Normal probability curve has how many mode(s)?  
(A) One  
(B) Two  
(C) Three  
(D) Four
70. What percentage of area falls between the plus minus one Sd unit from the mean?  
(A) 34%  
(B) 99.09%  
(C) 68.26%  
(D) 95.04%
71. In which year Binet Simon test of intelligence became Stanford-Binet test?  
(A) 1916  
(B) 1909  
(C) 1917  
(D) 1923
72. Reliability of a test is highest when the items of the test is.....  
(A) Heterogeneous  
(B) Homogenous  
(C) Mixed  
(D) Difficult
- 
73. Two major components of Construct validity are.....  
(A) Content and criterion related validity  
(B) Convergent and divergent validity  
(C) Concurrent and predictive  
(D) Factorial and predictive



74. In an experiment, the researcher is interested in comparing boys and girls on the academic achievement scores, which kind of t-test will be used?
- (A) Independent group
  - (B) Correlated t-test
  - (C) Matched group t-test
  - (D) None of the above
75. The sum of the deviation from the mean is always....
- (A) Zero
  - (B) One
  - (C) Two
  - (D) Three
76. In which kind of the research design, the researcher explores the event which has already occurred...
- (A) Pure experimental design
  - (B) Ex-post facto design
  - (C) Field experiments
  - (D) Field studies
77. The Standard deviation from the following data would be....
- 2, 4, 6, 8, 10, 12
- (A) 3.74
  - (B) 2.89
  - (C) 2.25
  - (D) 4.45
78. Number of testees who answered the item correctly is divided by (/) Total number of testees who took the test measures.....
- (A) Item validity
  - (B) Item discrimination index
  - (C) Distraction ability of the item
  - (D) Item difficulty
79. Out of the following which one is not the example of probability sampling?
- (A) Simple random sampling
  - (B) Stratified sampling
  - (C) Cluster sampling
  - (D) Quota sampling
- 
80. Who gave the concept of t-test?
- (A) Ronald Fisher
  - (B) Henry Garrett
  - (C) Sir William Gossett
  - (D) None of the above

81. Which of the following is NOT a fertilizer product?

- (A) Urea
- (B) Di Amonium Phosphate
- (C) Calcium Carbonate
- (D) All are fertilizers

82. Enzymes are

- (A) Vitamins
- (B) Carboxylic acids
- (C) Proteins
- (D) Bases

83. When a light wave is reflected from a mirror, there is a change in its

- (A) Frequency
- (B) Amplitude
- (C) Wavelength
- (D) Velocity

84. India's Space Rocket Launching Centre is in .....

- (A) Portblair
- (B) Hassan
- (C) Kochi
- (D) Sri Harikota

85. With which of the following festivals Jallikattu is associated?

- (A) Onam
- (B) Pongal
- (C) Vishu
- (D) Shivarathri

86. Black soils are best suited for the cultivation of?

- (A) Cotton
- (B) Rice
- (C) Cereals
- (D) Sugarcane

87. Due to the outbreak of which virus did the WHO declare a Public Health Emergency of International Concern in February 2016?

- (A) Zika
- (B) Ebola
- (C) Swine flu
- (D) Chikungunya

---

88. 'VAT' is imposed-

- (A) Directly on consumer
- (B) On the first stage of production
- (C) On all stages between production and sale
- (D) On final stage of production



89. Sigmund Freud began his professional career as a

- (A) Neurologist
- (B) Psychiatrist
- (C) Psychoanalyst
- (D) Philosopher

90. Rajya Sabha members are elected by

- a) Lok Sabha
- b) Legislative assembly
- c) The people
- d) Legislative Council

91. World AIDS day is celebrated on

- (A) 1 December
- (B) 2 December
- (C) 1 November
- (D) 3 December

92. Find the relationship as expressed in the given pair—

Circle: Circumference:: Square : ?

- (A) Volume
- (B) Area
- (C) Diagonal
- (D) Perimeter

93. Find the relationship as expressed in the given pair—

Import: Export: : Expenditure : ?

- (A) Deficit
- (B) Revenue
- (C) Debt
- (D) Tax

94. "Where the mind is without fear" were lines by—

- (A) Mahatma Gandhi
- (B) Swami Vivekananda
- (C) Gurudev Rabindranath Tagore
- (D) Sardar Bhagat Singh

95. Pyorrhea is a disease of the

- (A) Nose
- (B) Gums
- (C) Heart
- (D) Lungs

96. Which committee has recommended change in the structure and ecosystem in the Indian cricket board?

- (A) RM Lodha committee
- (B) Kirit Parikh committee
- (C) Bibek Debroy committee
- (D) Naresh Chandra committee

97. Which car brand was sold to Peugeot recently (2017)?

- (A) Datsun
- (B) Maruti
- (C) Ambassador
- (D) Fiat

98. Which telecom company launched its first payment bank on 12th Jan 2017?

- (A) Vodafone
- (B) Airtel
- (C) Idea
- (D) None of the above

99. Dronacharya Award is given for excellence in .....

- (A) Literacy Work
- (B) Social Service
- (C) Coaching in Sports
- (D) Journalism

100. Carrot is orange in color because?

- (A) It grows in the soil
- (B) It is not exposed to sunlight
- (C) It contains carotene
- (D) The entire plant is orange in color