

M.A-English 2020 JMI

030075

Paper Code No: M05

Question Booklet No.

SET - C

ENTRANCE EXAMINATION - 2020 - 21

(PART - A)

<https://www.instagram.com/jamiadrive>

Roll No.

M0503075

Signature of Invigilator

Time: 1 Hour 30 Minutes

Total Marks: 100

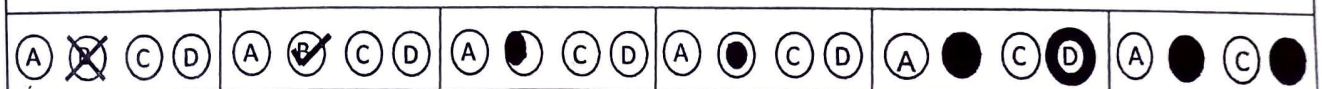
Instructions to Candidates

1. Do not write your name or put any other mark of identification anywhere in the OMR Answer Sheet. IF ANY MARK OF IDENTIFICATIONS IS DISCOVERED ANYWHERE IN OMR RESPONSE SHEET, the OMR sheet will be cancelled, and will not be evaluated.
2. This Question Booklet contains two parts. Part A contains 40 Multiple Choice Questions of One mark each and Part B contains descriptive questions of 60 marks.
3. Space for rough work has been provided at the beginning and end. Available space on each page may also be used for rough work.
4. There is negative marking in Multiple Choice Questions. For each wrong answer, 0.25 marks will be deducted.
5. USE/POSSESSION OF ELECTRONIC GADGETS LIKE MOBILE PHONE, iPhone, iPad, pager ETC. is strictly PROHIBITED.
6. Candidate should check the serial order of questions at the beginning of the test. If any question is found missing in the serial order, it should be immediately brought to the notice of the Invigilator. No pages should be torn out from this question booklet.
7. Answers must be marked in the OMR Response sheet which is provided separately. OMR Response sheet must be handed over to the invigilator before you leave the seat.
8. The OMR Response sheet should not be folded or wrinkled. The folded or wrinkled OMR/Response Sheet will not be evaluated.
9. Write your Roll Number in the appropriate space (above) and on the OMR Response Sheet. Any other details, if asked for, should be written only in the space provided.
10. There are four options to each question marked A, B, C and D. Select one of the most appropriate options and fill up the corresponding oval/circle in the OMR Response Sheet provided to you. The correct procedure for filling up the OMR Answer Sheet is mentioned below.

CORRECT METHOD



WRONG METHODS



7. Which among the following is not closet drama ?
- A *Manfred* B *Prometheus Unbound*
C *Samson Agonistes* D *The Tempest*
8. What does the name Astrophel connote in Philip Sidney's *Astrophel and Stella* ?
- A Sun Lover B Star Lover
C Moon Lover D Earth lover
9. J.M. Coetzee received his second Booker Prize in 1999 for his novel:
- A *The Life and Times of Michael K*
B *Disgrace*
C *Diary of a Bad Year*
D *Boyhood: Scenes from Provincial Life*
10. Who wrote *MacFlecknoe*?
- A Alexander Pope B Dryden
C Milton D Shakespeare
11. "My Last Duchess" is a poem by
- A Robert Browning B W.B Yeats
C Alfred Tennyson D Dylan Thomas
12. In which country did Harlem Renaissance occur ?
- A United states of America B South Africa
C Australia D France

13. Who defined Postmodern as an "incredulity towards metanarratives"?
- A Jean-Francois Lyotard B Terry Eagleton
C Jacques Derrida D Roland Barthes
14. Who is the author of *The Canterbury Tales* ?
- A Geoffrey Chaucer B John Gower
C King Arthur D Geoffrey of Monmouth
15. Lago is a character in which of the Shakespeare's plays?
- A *The Tempest* B *Othello*
C *As You Like It* D *Macbeth*
16. *The Golden Notebook* is a novel by
- A Dorris Lessing B William Golding
C A.S. Byatt D Julian Barnes
17. Who is the protagonist of Chinua Achebe's novel, *Things Fall Apart*?
- A Okonkwo B Ikemefuna
C Ezinma D Mr. Brown
18. Andre Breton is 'associated with which of the following movements
- A Symbolism B Existentialism
C Surrealism D Dadaism

19. Which of the following is considered to be the first Gothic novel?
- A *The Castle of Otranto* B *Dracula*
C *Frankenstein* D *Melmoth the wanderer*
20. The Bildungsroman is a novel of formation or development. Which of the following is a Bildungsroman?
- A *Jane Eyre* B *Hard Times*
C *Nausea* D *The Red Badge of Courage*
21. *The Rape of the Lock* is an Heroic-comical poem in five cantos dedicated to
- A Arabella Fermor B Dorothea Casaubon
C Elizabeth Bennett D Maud Gonne
22. Zeus is another name for
- A Mephistopheles B Diana
C Jupiter D Poseidon
23. *Aspects of the Novel* is a book by
- A E. M. Forster B William Frazer
C Henry James D Cleanth Brooks

24. "All the world's a stage, and all the men and women merely players" is a quote from

- | | | | |
|---|----------------------------------|---|-------------------------|
| A | <i>The Tempest</i> | B | <i>Romeo and Juliet</i> |
| C | <i>All's Well that Ends Well</i> | D | <i>As You Like It</i> |

25. A literary symbol combines an image with a

- | | | | |
|---|---------|---|-------------|
| A | Picture | B | Concept |
| C | Sign | D | Description |

26. In Homer's *Iliad*, who is the leader of the Greek army?

- | | | | |
|---|-----------|---|----------|
| A | Agamemnon | B | Achilles |
| C | Patroclus | D | Hercules |

27. Which of the following is not a play by Oscar Wilde?

- | | |
|---|--|
| A | <i>The Importance of Being Earnest</i> |
| B | <i>Salome</i> |
| C | <i>Lady Windermere's Fan</i> |
| D | <i>She Stoops to Conquer</i> |

28. Which of the following Indian writers is not a poet?

- | | | | |
|---|----------------|---|------------------------|
| A | Sarojini Naidu | B | Kamala Das |
| C | Arundhati Roy | D | Arundhati Subhramaniam |

29. Which of the following is not a character out of Charles Dickens' novels?
- | | |
|--------------|--------------------|
| A Pip | B Ebenezer Scrooge |
| C Uriah Heep | D Rupert Birkin |
30. In a literary work, allusion refers to ?
- A A Pun
- B Alliteration
- C A false image
- D Reference to other literary sources
31. Gabriel Garcia Marquez originally wrote in
- | | |
|-----------|-----------|
| A English | B Spanish |
| C German | D French |
32. Dove Cottage is the name of
- A Mary Shelley's House
- B The name of the cottage where Wordsworth lived with his sister Dorothy
- C A Poem by John Keats
- D A poem by Wordsworth
33. Who is the author of *Joothan* ?
- | | |
|-----------------|----------------------|
| A Premchand | B Rahi Masoom Raza |
| C Krishna Sobti | D Om Prakash Valmiki |

34. "The Dicing and its sequel" are episodes from the translated version of the
- | | | | |
|---|---------------------|---|-----------------------|
| A | <i>Mahabharata</i> | B | <i>Ramayana</i> |
| C | <i>Bhagvad Gita</i> | D | <i>Ramcharitmanas</i> |
35. Premchand wrote
- | | |
|---|--|
| A | Novels |
| B | Short stories and novels |
| C | Drama |
| D | Novels, Short stories, and non-fiction prose |
36. *English, August : An Indian Story* is a novel by
- | | |
|---|------------------------------|
| A | Upamanyu Chatterjee |
| B | Kiran Desai |
| C | Mulk Raj Anand |
| D | Bankim Chandra Chattopadhyay |
37. "But at my back I always hear/Times winged chariot hurrying near" are lines from a poem by
- | | | | |
|---|-----------------|---|---------------|
| A | S. T. Coleridge | B | Philip Larkin |
| C | Andrew Marvell | D | Ted Hughes |
38. Who co-authored the book *Tales from the Shakespeare*
- | | | | |
|---|----------------|---|--------------------|
| A | Mary Lamb | B | Mary Shelley |
| C | Mary Ann Evans | D | Mary Wollstoncraft |

39. King James' Authorised version of the Bible:
- A Is a commissioned translation in to English
 - B Was translated by John Wycliffe
 - C Was translated by Robert Lydgate
 - D Is the original Hebrew Bible
40. Octave and Sestet are terms used to describe the components of a:
- A Ballad
 - B Dirge
 - C Sonnet
 - D Lullaby

